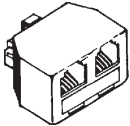


MODULAR ADAPTERS



- Handset Cord Coupler: #SER6S (10 @ \$2.69) \$2.99
- 4 Pin Coupler #SER2K: \$1.59 (10 @ \$1.39)
- 6 Pin Coupler #SER2L: \$1.89 (10 @ \$1.69)
- 8 Pin Coupler (Straight-Thru #SER2N or Reversed #SER2M): \$3.19 (10 @ \$2.99)



Low Prices!

- 4 Pin Y Adapter #SER2G: \$1.79 (10 @ \$1.59)
- 4 Pin Y Adapter #SER2J - ALL FEMALE JACKS! \$1.99 (10 @ \$1.79)
- 6 Pin Y Adapter #SER2H: \$1.99 (10 @ \$1.79)
- 8 Pin Y Adapter #SER2I: \$5.59 (10 @ \$4.99)
- Line 1 / Line 2 Splitting Y Adapter #SER2E: \$2.59 (10 @ \$1.99)



3 Way Jacks:

- Line 1 / Line 2, L1 & L2 Triple Jack #SER2F: \$2.99 (10 @ \$2.59)
- 3 Way Jack - L1 & L2 on all 3 Jacks #SER3M: \$2.99 (10 @ \$2.59)
- 3 Way Splitter Jack with L1, L2, L3 #SER3L: \$2.99 (10 @ \$2.59)
- 5 Way Jack #SER2S: \$5.95 All the Same (10 @ \$4.99)
- Reversing Cord #SER3O \$3.99
- Two Line Adapter (2 Cords To 1 Jack) #SER3N \$5.95

MULTIPLY AN RJ-11 BY FIVE!



All 4 Pins on Each Jack

Can Wrenches

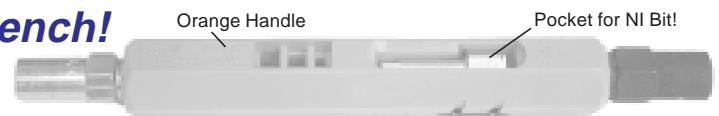
Super Can Wrench!

3/8' & 7/16", PLUS

Wire Stripper, Drop Wire Slitter, and an NI Security Bit that snaps into socket!

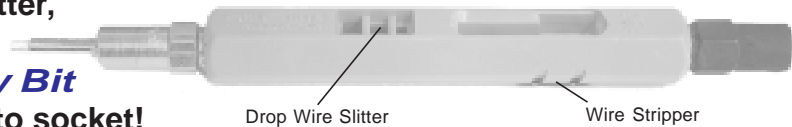


Booth Wrench \$10.95 #HND1Q



Orange Handle Pocket for NI Bit!

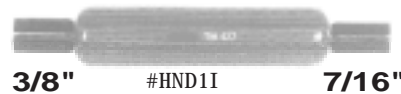
\$28.95 • 3 @ \$27.95 #HND1M



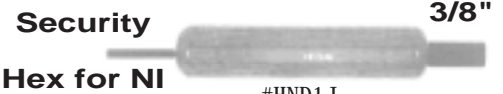
Drop Wire Slitter Wire Stripper

Standard Can Wrench \$15.95 We All Know and Love!

Special 3/8" & NI Wrench! \$19.25



3/8" #HND1I 7/16"



Security 3/8" Hex for NI #HND1J



9" Overall Length \$18.95 7/16"

#HND8L

3/8" Sockets Insulated from Each Other

Magic Adapters!

\$10.95 ea. for #1, 2 & 3

Use 1 at Each End...

1. Make 2 Ethernet Jacks from 1 Ethernet / WECO Cable!

You've gotta install 2 Ethernet 10Base-T PCs, but the only cable you've got is an RJ45 WECO (for a Merlin set or Ethernet 10BaseT). #SWI 9G

Mounts Up & Down to Fit in Patch Panel!

2. Make 2 USOC 4 Conductor Jacks from 1 Ethernet / WECO Cable!

You've gotta install some single line or system phones or modems, but the only cable you've got is an RJ45 WECO (for a Merlin set or Ethernet 10BaseT). #SWI 9K

3. Make 1 USOC 3 Pair Jack and 1 Single Pair Jack from 1 Ethernet / WECO Cable!

Put a regular phone and a modem at a single RJ45 WECO. #SWI 8B



4. Make 12 Ethernet Jacks from 1 - 25 Pair Amp Ended Cable!

4 Pair 10BaseT - 12 Ports - Male Amp - #SER5G \$18.95
4 Pair 10BaseT - 12 Ports - Fem Amp - #SER5H \$18.95

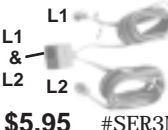
HARMONICA

Run 1 25 Pair Cable... Put in 12 Networked PCs!



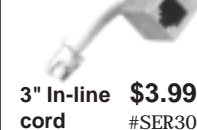
With Mounting Screws & Velco

TWO LINE ADAPTER



\$5.95 #SER3N

REVERSING CORD



3" In-line cord \$3.99 #SER3O

At Patch Panel

Economy ETHERNET SPLITTER

10 and 100-BaseT Ethernet uses only TWO PAIRS out of a FOUR PAIR Cable!

Use our Economy ETHERNET SPLITTER at each end of a cable run to put Two PCs on One Cable!

\$6.99 • 10 @ \$6.59

NOTE: Can be mixed with the "Magic Adapter" (above), which looks neater on a Patch Panel.

At Workstation #SWI 9E

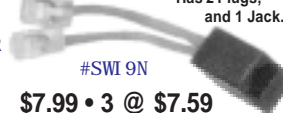


HUB Ethernet Splitter

Use at the HUB, with a regular Patch Cord going to the Patch Panel.

Has 2 Plugs, and 1 Jack.

Use with our ETHERNET SPLITTER at the Workstation end, to put Two PCs on One Cable!



#SWI 9N

\$7.99 • 3 @ \$7.59



www.sandman.com

• Mike Sandman... Chicago's Telecom Expert •
• 390 E. Irving Park Rd. • Roselle, IL 60172 • 630-980-7710 •

